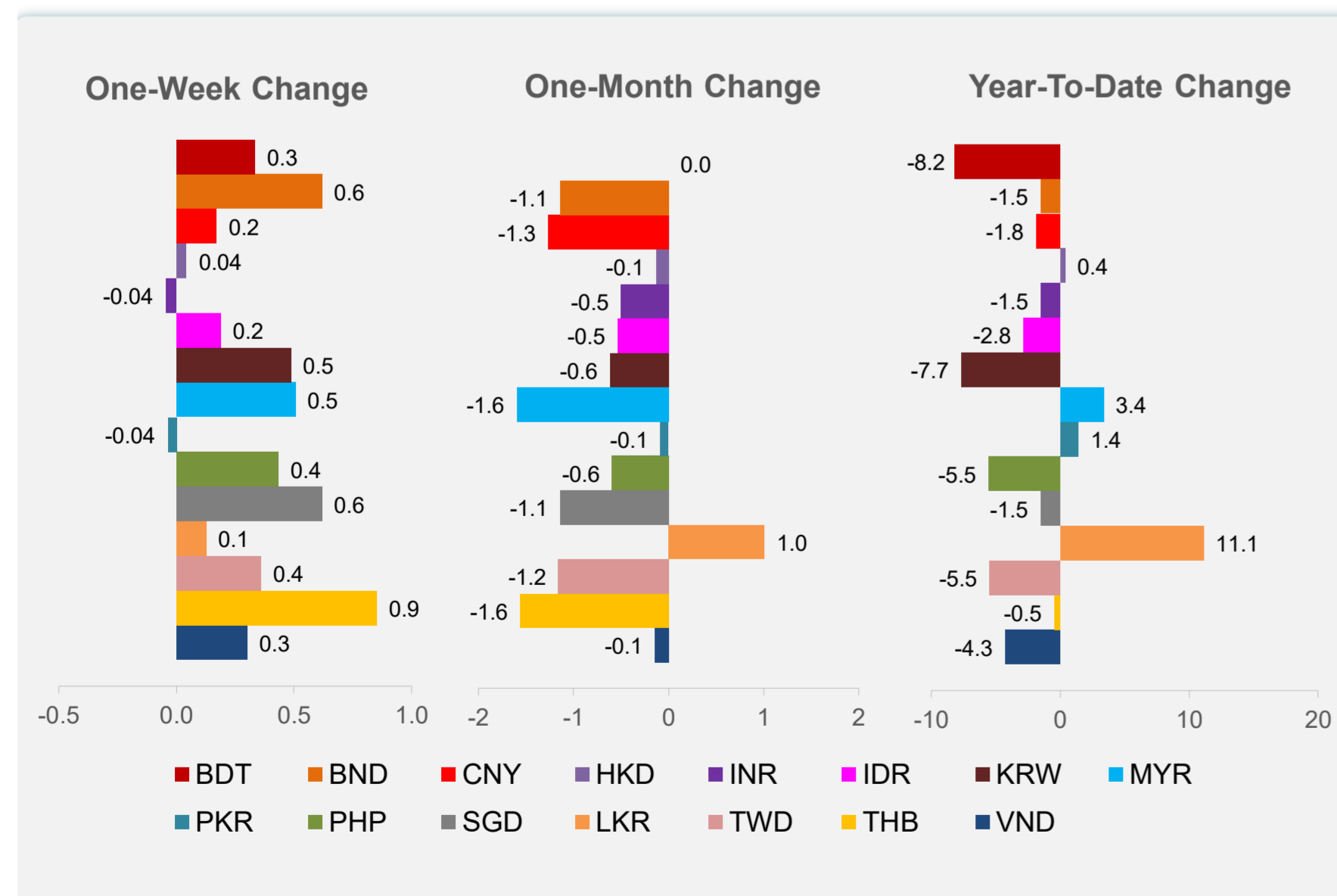
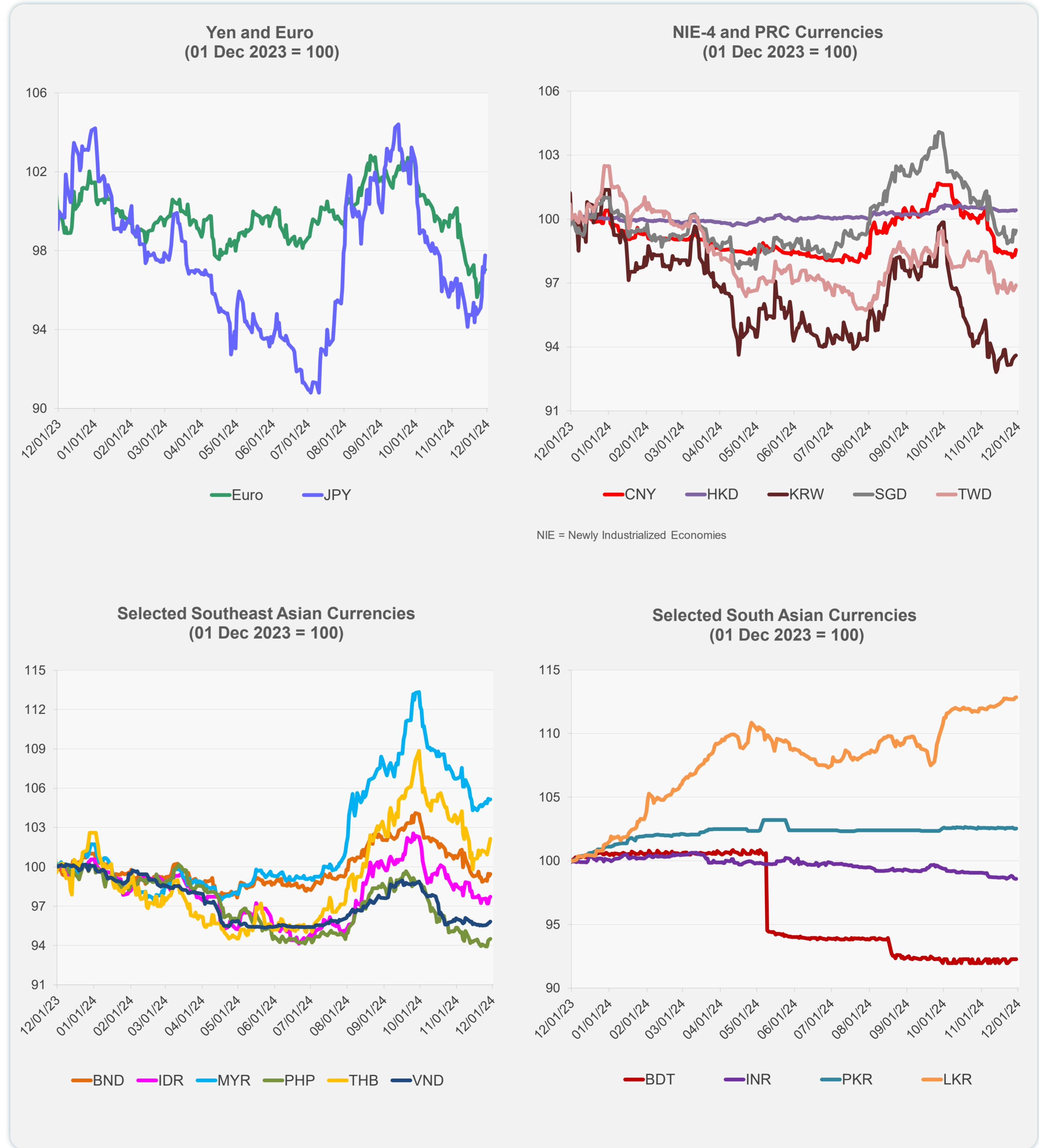
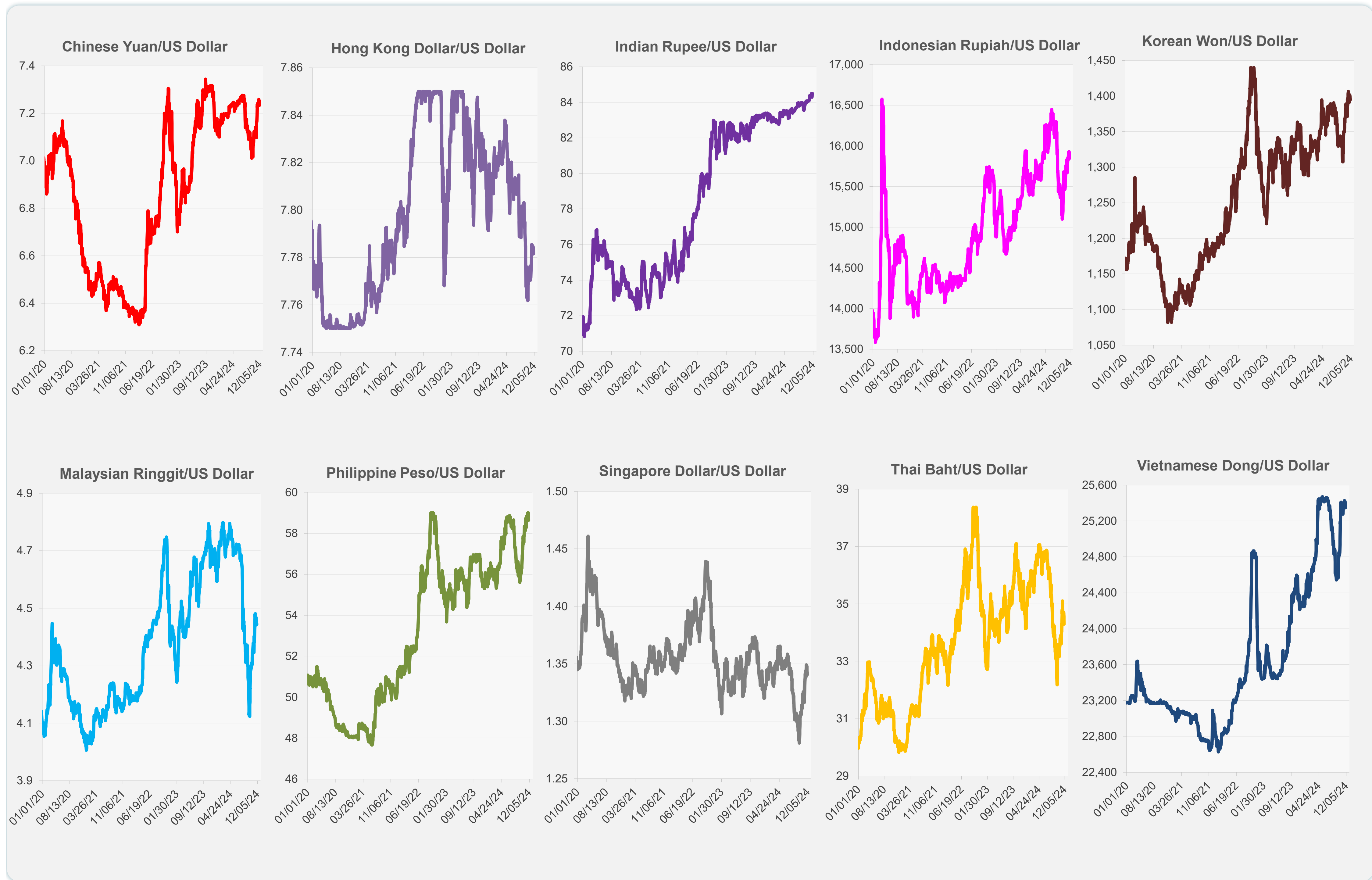


	Latest Closing	% change from Previous Day	% change from 01-Jan-24
Euro	0.95	0.07	-4.37
Japanese yen (JPY)	150.19	0.89	-6.19
Bangladeshi taka (BDT)	119.50	0.00	-8.16
Brunei dollar (BND)	1.34	0.16	-1.52
Chinese yuan (CNY)	7.23	0.26	-1.84
Hong Kong dollar (HKD)	7.78	0.03	0.39
Indian rupee (INR)	84.50	0.00	-1.49
Indonesian rupiah (IDR)	15,845.00	0.16	-2.83
Korean won (KRW)	1,395.05	0.04	-7.67
Malaysian ringgit (MYR)	4.45	0.04	3.35
Pakistan rupee (PKR)	277.93	0.03	1.41
Philippine peso (PHP)	58.64	0.09	-5.54
Singapore dollar (SGD)	1.34	0.16	-1.52
Sri Lanka rupee (LKR)	290.62	0.03	11.13
Taipei,China NT dollar (TWD)	32.48	0.13	-5.46
Thai baht (THB)	34.30	0.42	-0.46
Vietnamese dong (VND)	25,346.50	0.10	-4.26



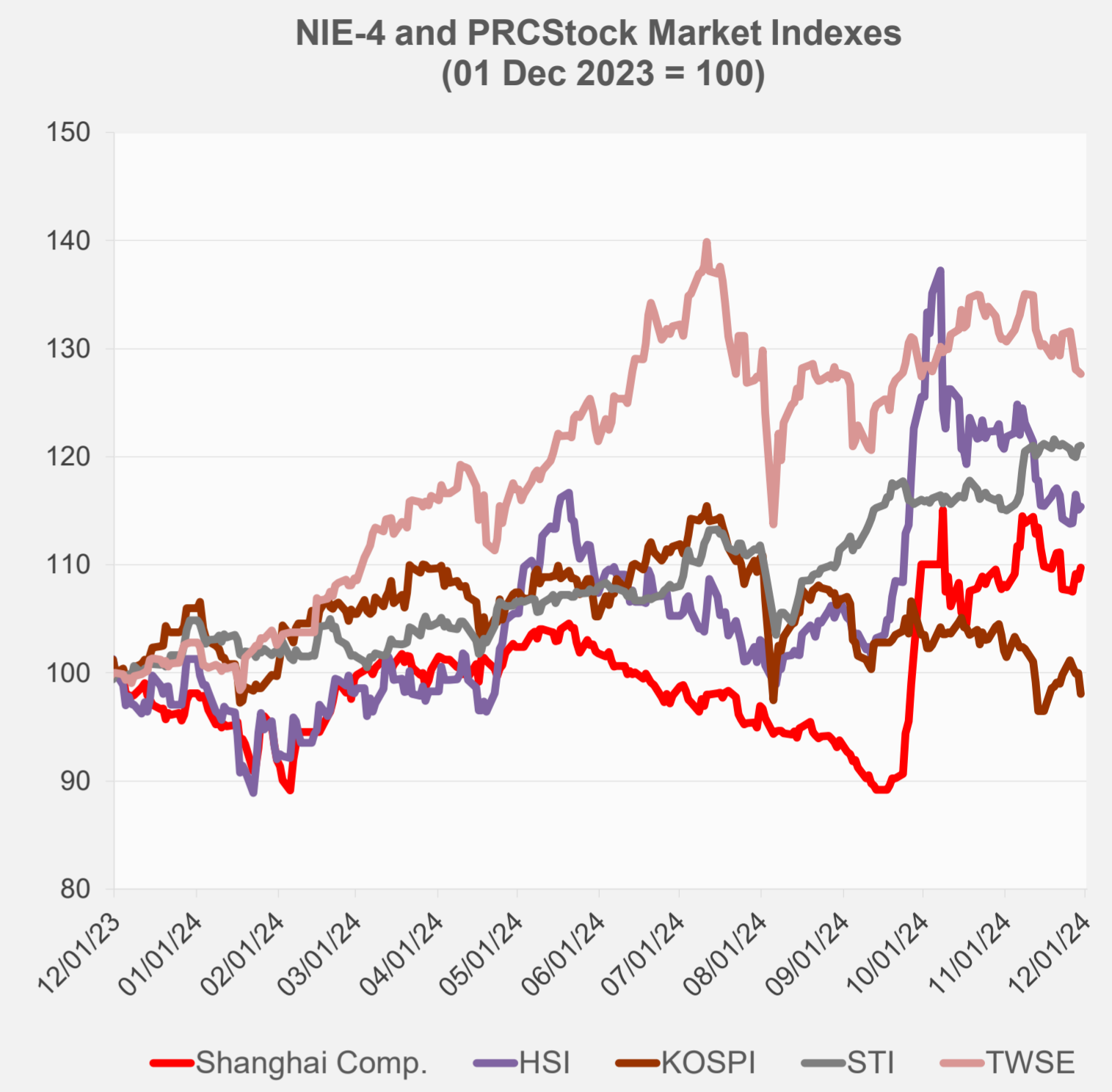
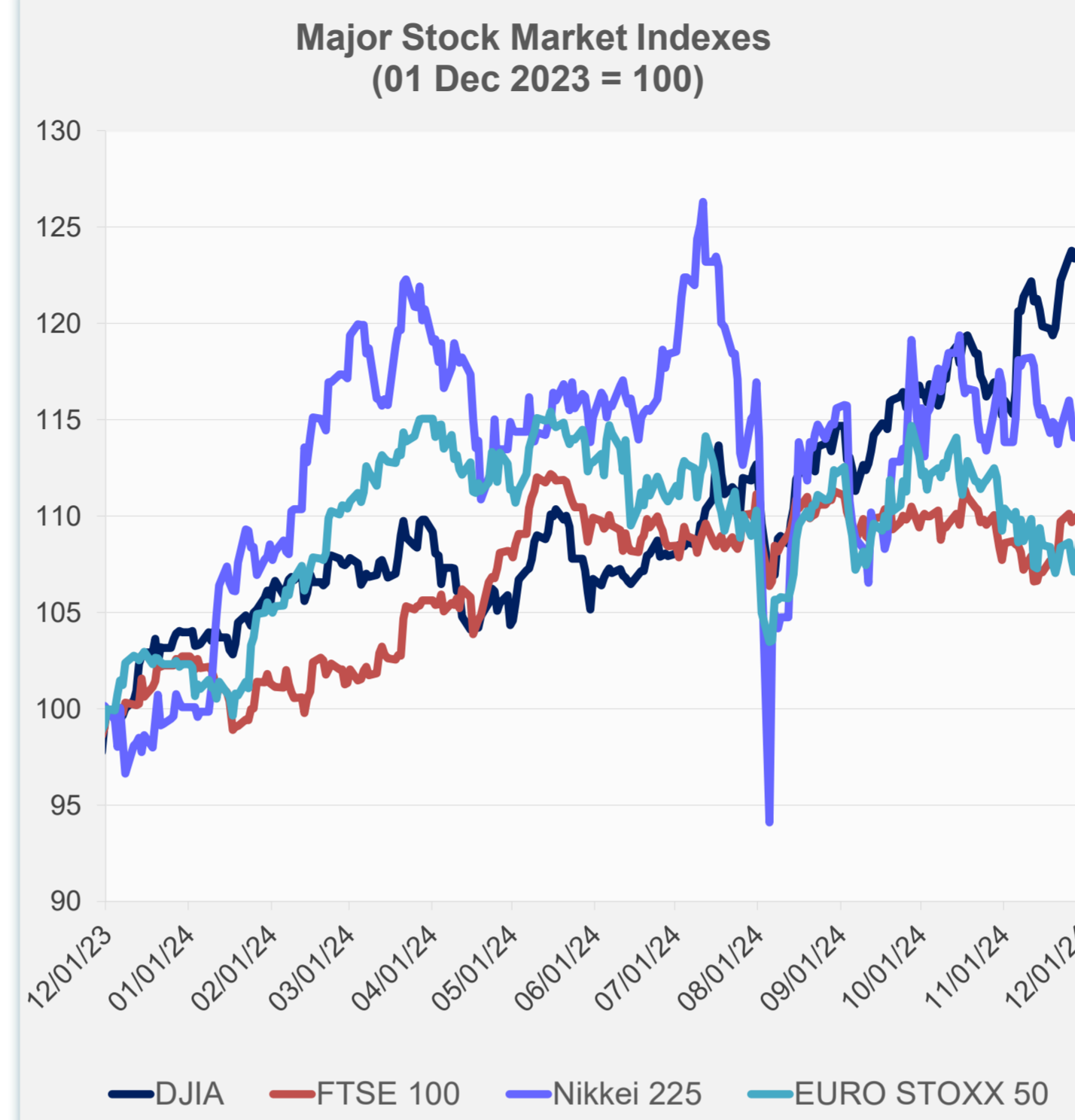
Note: Negative/Decreasing values indicate depreciation of local currency, and positive/increasing values indicate appreciation.
Source: ADB calculations using data from Haver Analytics.



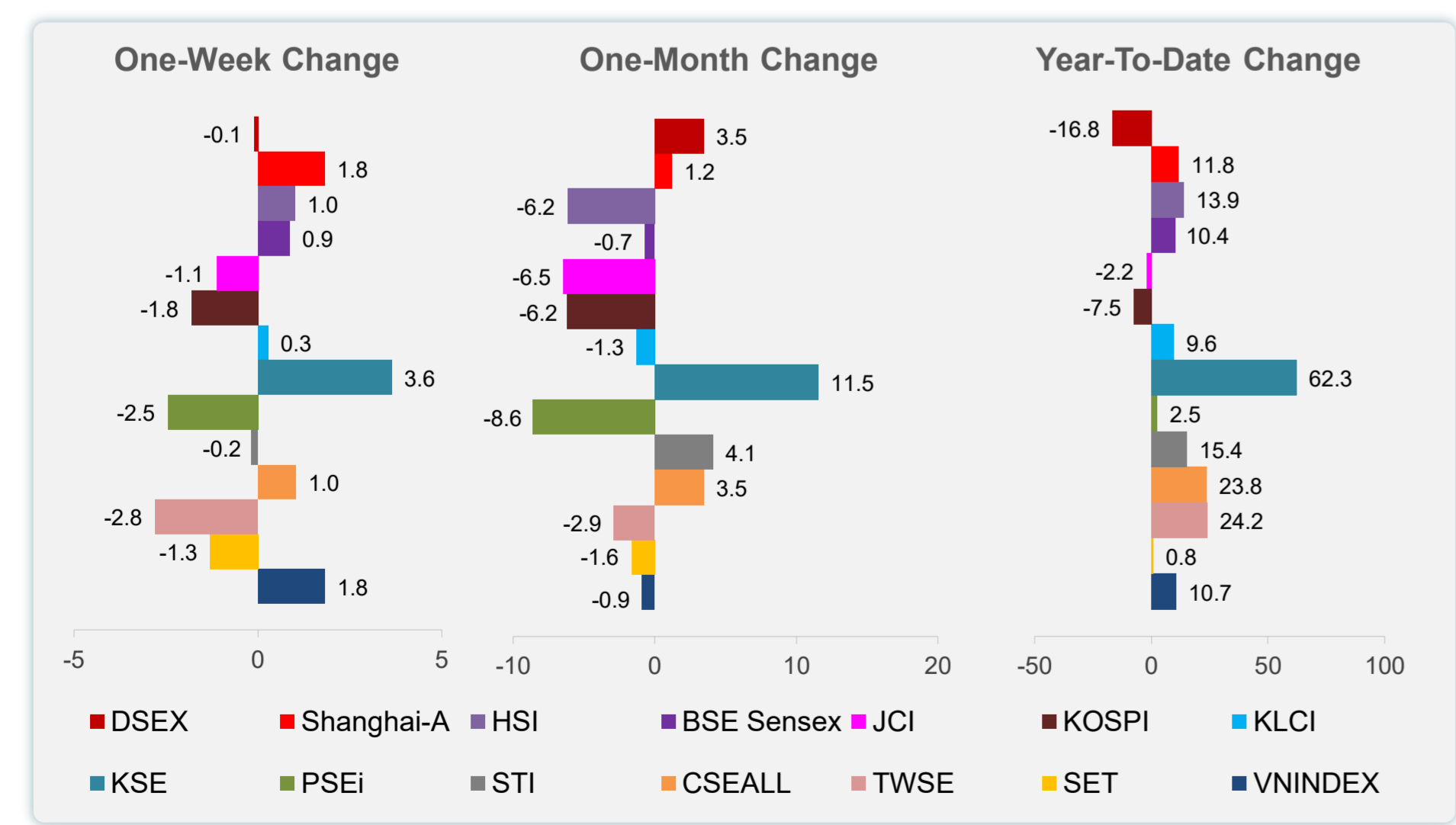
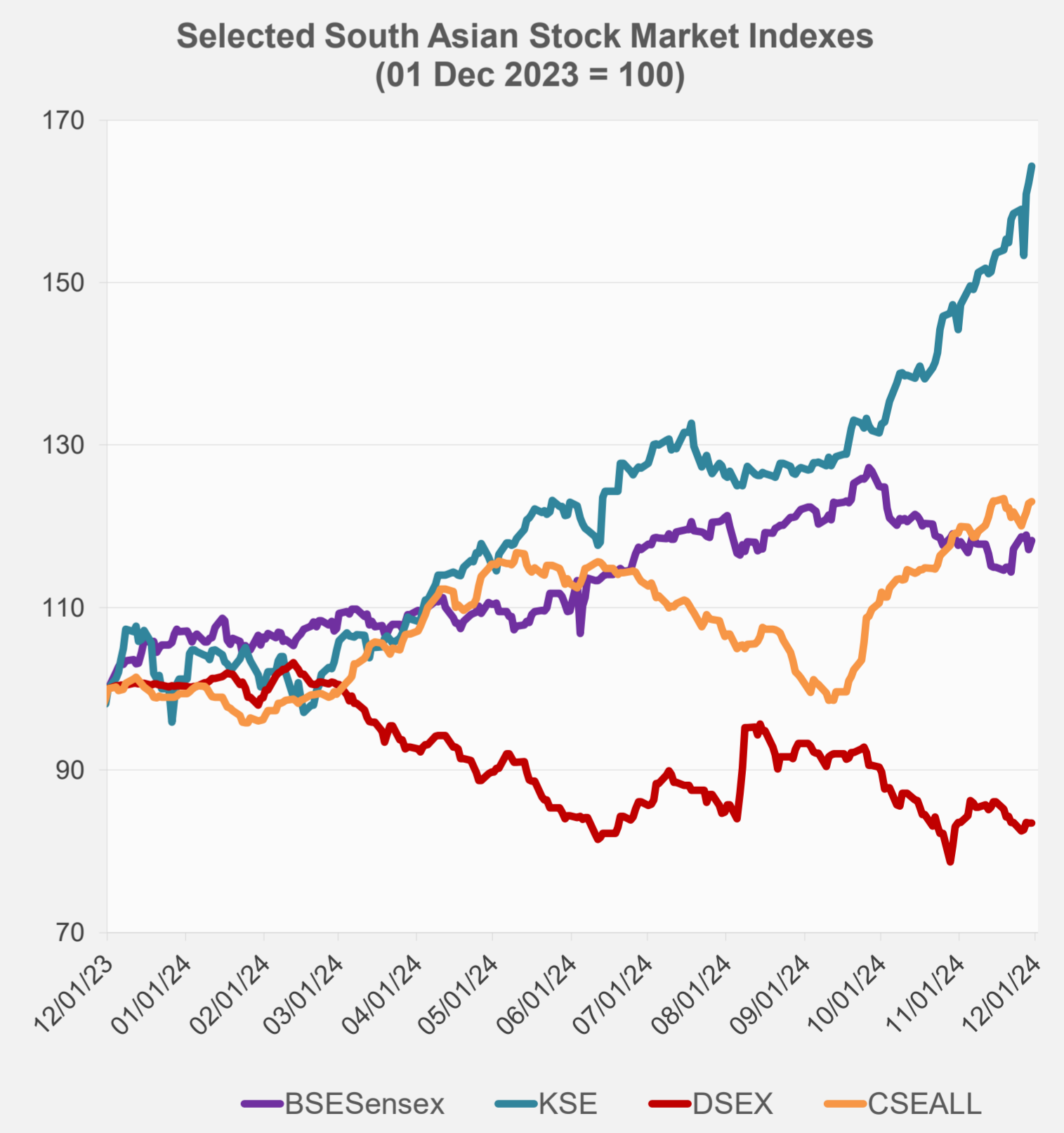
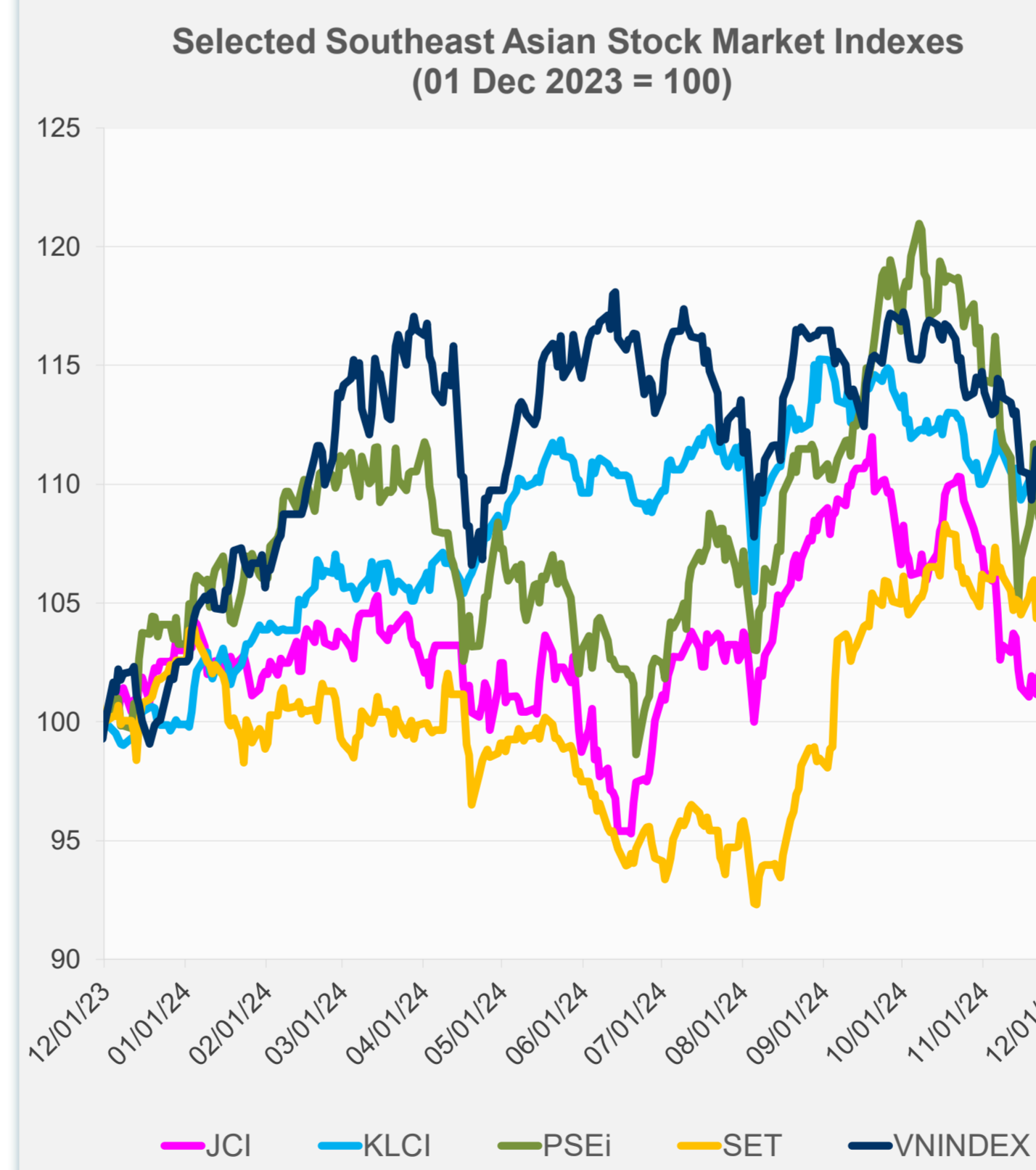
Source: Haver Analytics.

Daily Market Watch
STOCK INDEXES

	Latest Closing	% change from Previous Day	% change from 01-Jan-24
US Dow Jones Ind Avg	44,910.65	0.42	19.16
US NASDAQ	19,218.17	0.83	28.02
US S&P 500	6,032.38	0.56	26.47
UK FTSE 100	8,287.30	0.07	7.16
EURO STOXX 50	4,804.40	0.96	6.26
Japan NIKKEI 225	38,208.03	-0.37	14.18
Bangladesh DSEX	5,192.59	0.00	-16.82
PRC Shanghai Comp.	3,326.46	0.93	11.82
Hong Kong, China HSI	19,423.61	0.29	13.94
India BSE Sensex	79,802.79	0.96	10.42
Indonesia JCI	7,114.27	-1.19	-2.18
Korea, Rep. of KOSPI	2,455.91	-1.95	-7.51
Malaysia KLCI	1,594.29	-0.20	9.60
Pakistan KSE 100	101,357.32	1.27	62.30
Philippines PSEi	6,613.85	-0.37	2.54
Singapore STI	3,739.29	0.05	15.40
Sri Lanka CSEALL	13,188.99	0.19	23.79
Taipei, China TWSE	22,262.50	-0.16	24.16
Thailand SET	1,427.54	-0.03	0.83
Viet Nam VNINDEX	1,250.46	0.67	10.67



NIE = Newly Industrialized Economies



Sources: ADB calculations using data from CEIC Data Company and Haver Analytics.



Sources: CEIC Data Company and Haver Analytics.

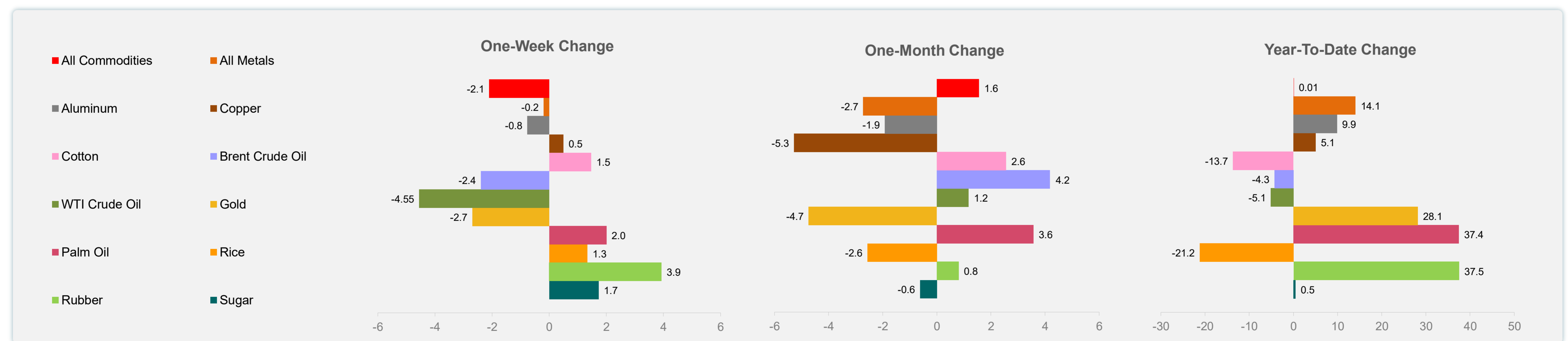
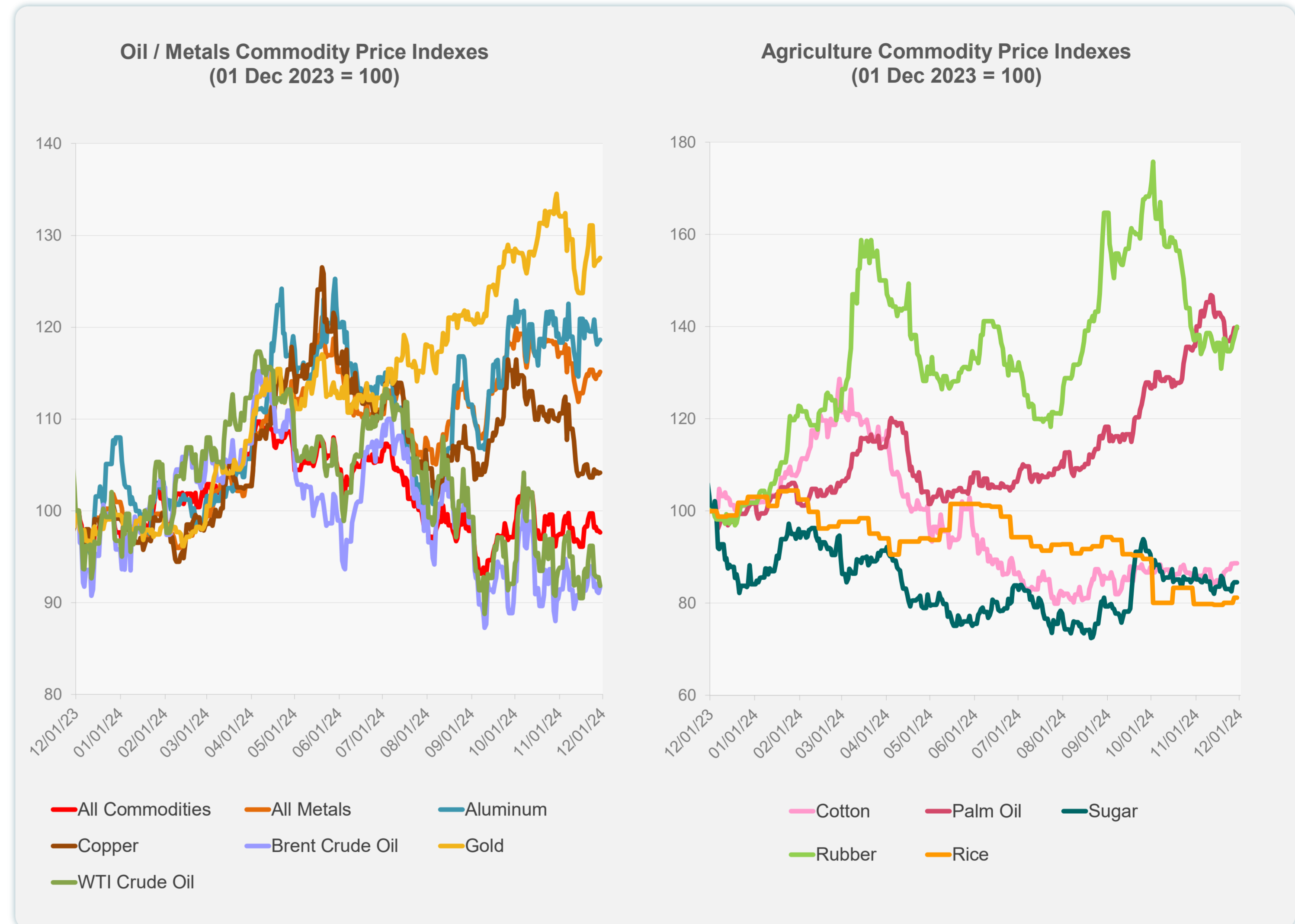
Daily Market Watch
COMMODITY PRICES

2 December 2024, 9:00 AM Manila

	Unit	Latest Closing	% change from Previous Day	% change from 01-Jan-24
S&P All Commodities	US\$	535.71	-0.20	0.01
S&P All Metals	US\$	316.41	0.28	14.05
Aluminum	US\$/metric ton	2,576.72	0.17	9.86
Copper	US\$/metric ton	8,891.85	0.08	5.06
Cotton	US cents/lb	67.75	0.00	-13.69
Brent Crude Oil	US\$/barrel	74.27	0.69	-4.30
WTI Crude Oil	US\$/barrel	68.00	-1.05	-5.09
Gold	US\$/troy oz	2,643.15	0.20	28.12
Palm Oil	US\$/metric tonne	1,111.75	-0.05	37.42
Rice ¹	US\$/metric ton	531.00	0.00	-21.22
Rubber ²	US\$/kg	238.00	0.59	37.49
Sugar	US cents/lb	20.57	0.00	0.49

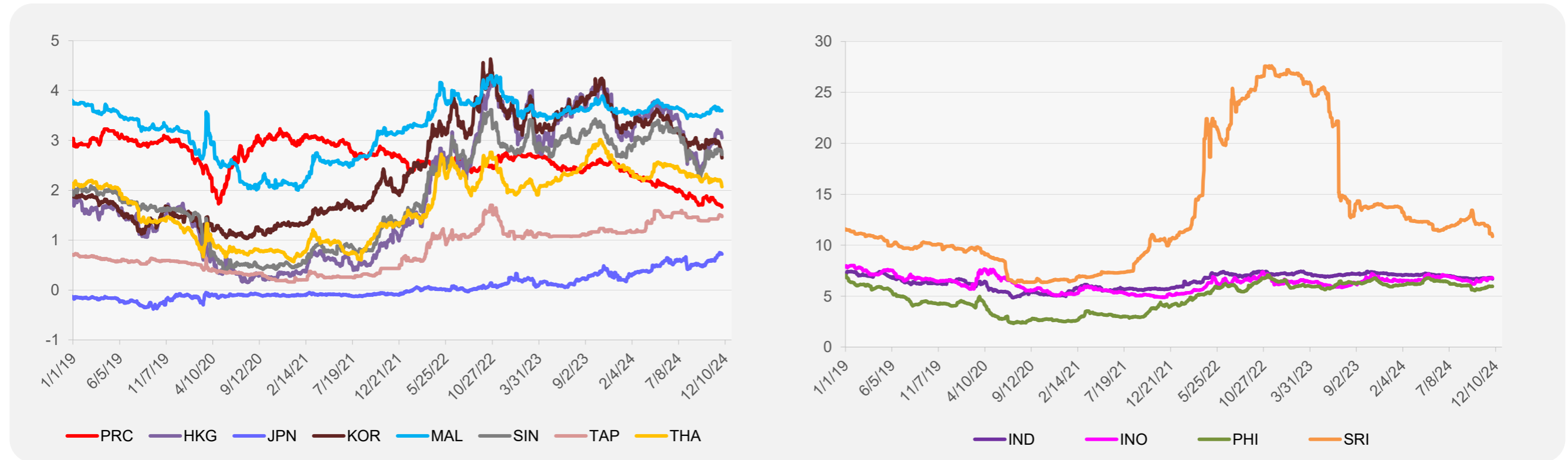
¹ Latest closing price from 27 November 2024.

² Singapore Exchange, Ribbed Smoked Sheet Rubber.

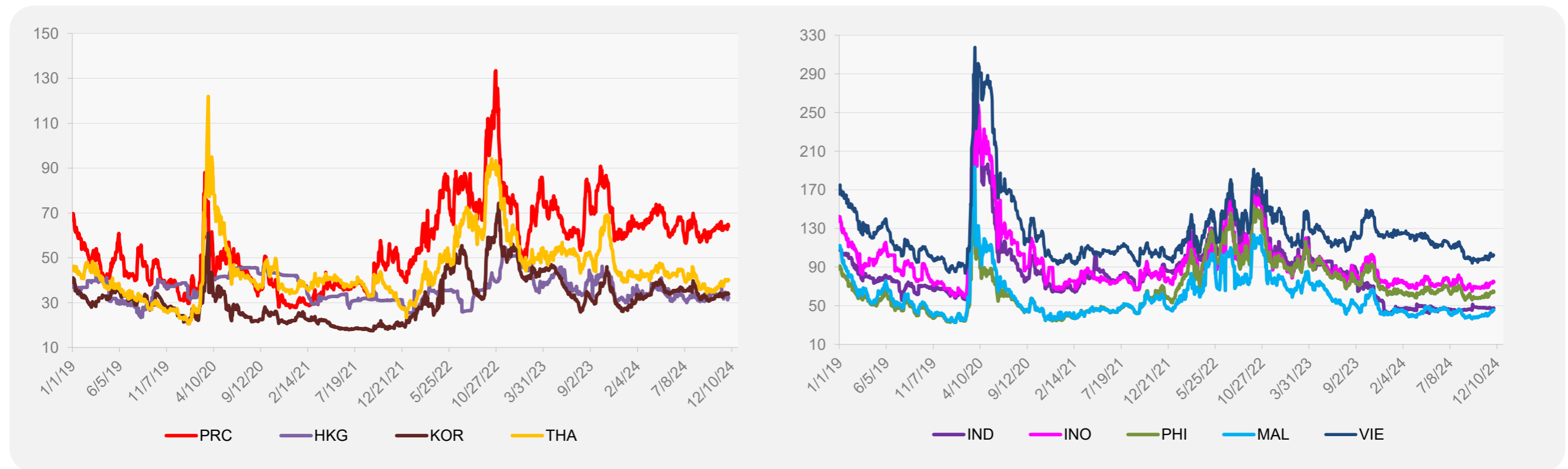


Source: ADB calculations using data from Bloomberg.

5-YEAR LOCAL CURRENCY GOVERNMENT BOND YIELDS (%)



5-YEAR CREDIT DEFAULT SWAP¹



¹ In USD and based on sovereign bonds.
Source: ADB calculations using data from Bloomberg.